

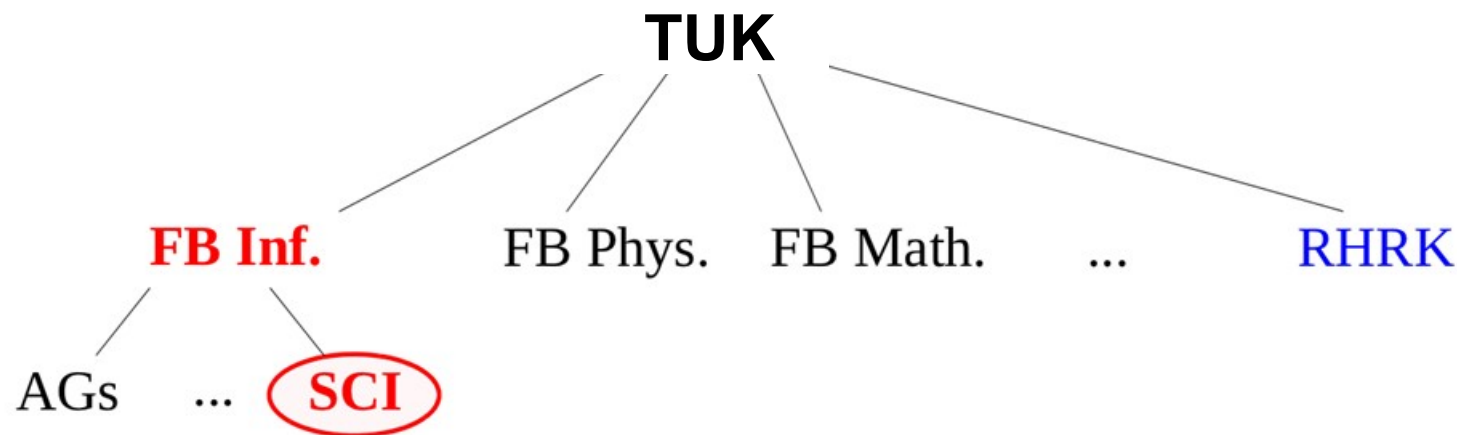
Introduction



<https://sci.informatik.uni-kl.de>

Computer Center

- structure of institutions at TUK



- **SCI** = "Service-Center Informatik"
Computer Center Dep. Computer Science
- **RHRK** = "Regionales Hochschul-Rechenzentrum KL"
Computer Center TUK

Services

- SCI-accounts
- login-server (thin clients, remote access)
- printing
- Gitlab CE
- e-mail
- soft- and hardware support
- v-server hosting
- Software Development

Software development

- VLU – Course Survey
 - <https://vlu.cs.uni-kl.de>
- KAI – Exam Protocols
 - <https://kai.cs.uni-kl.de>
- JOBS – Job market
 - <https://jobs.cs.uni-kl.de>
- SUBMISSION – Submit your Master Thesis
 - <https://submission.cs.uni-kl.de>
- APPLYMSC – Application Plattform
 - <https://applymsc.cs.uni-kl.de>
- ...

Account

- consists of:
 - login (e.g. "j_smith19")
 - password (e.g. "8d%sAf7S\$apPOis!%ds12")
 - homedirectory (e.g. "/home/j_smith19/", 2 GB)
 - e-Mail (e.g. "j_smith19@cs.uni-kl.de")
 - printaccount (using printers at SCI)
- where to get your account
 - **SCI:** only **computer science students**
 - **RHRK:** all students at TUK

Account usage

- login-server (remote or terminals)
- printing
- Gitlab CE (seperate registration needed)
- e-mail (@cs.uni-kl.de | @informatik.uni-kl.de)

Server infrastructure

- SCI-Login-Server with **LINUX (Ubuntu Linux, XFCE)**

Plattform:	2 * Transtec HPC Compute Node (40 Cores, 256 GB RAM)	
Virtuelle Hosts:	tux1 – tux6,	(german)
	tux8, tux9	(english)

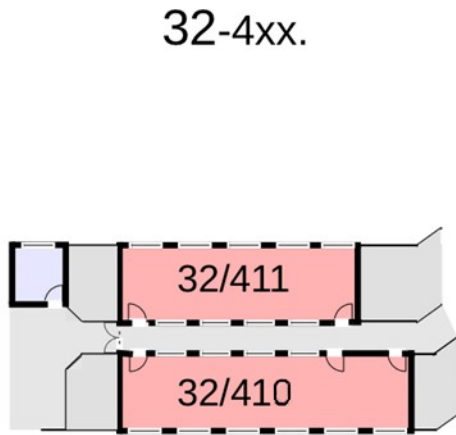
- SCI-V-Server hosting (**LXC, KVM**)

Plattform:	1 * Transtec HPC Compute Node (64 Cores, 256 GB RAM) 2 * Dell PowerEdge T620 (24 Cores, 128 GB RAM)	
Virtuel Hosts:	scilab-?????.cs.uni-kl.de lectures, projects, thesis, research	

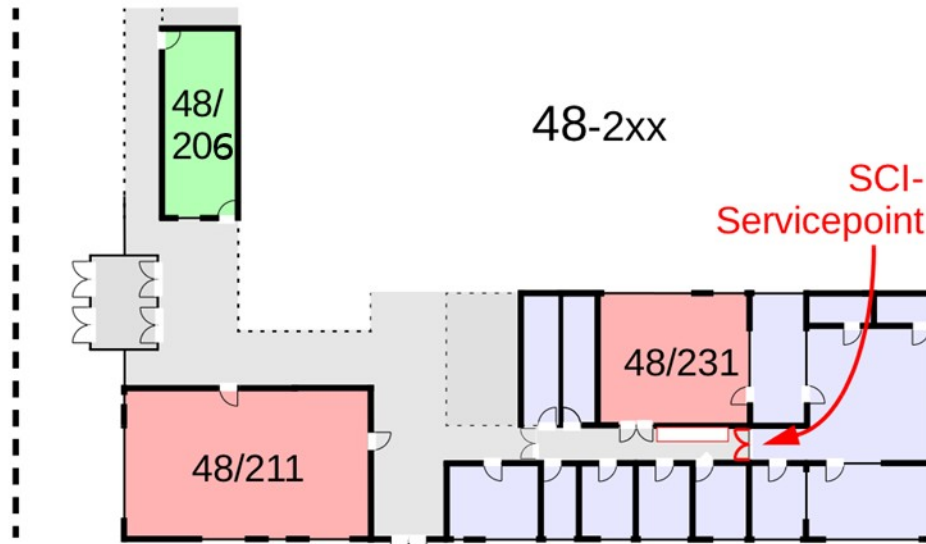
Terminals

- terminalrooms

* Geb. 32- (410 , 411)

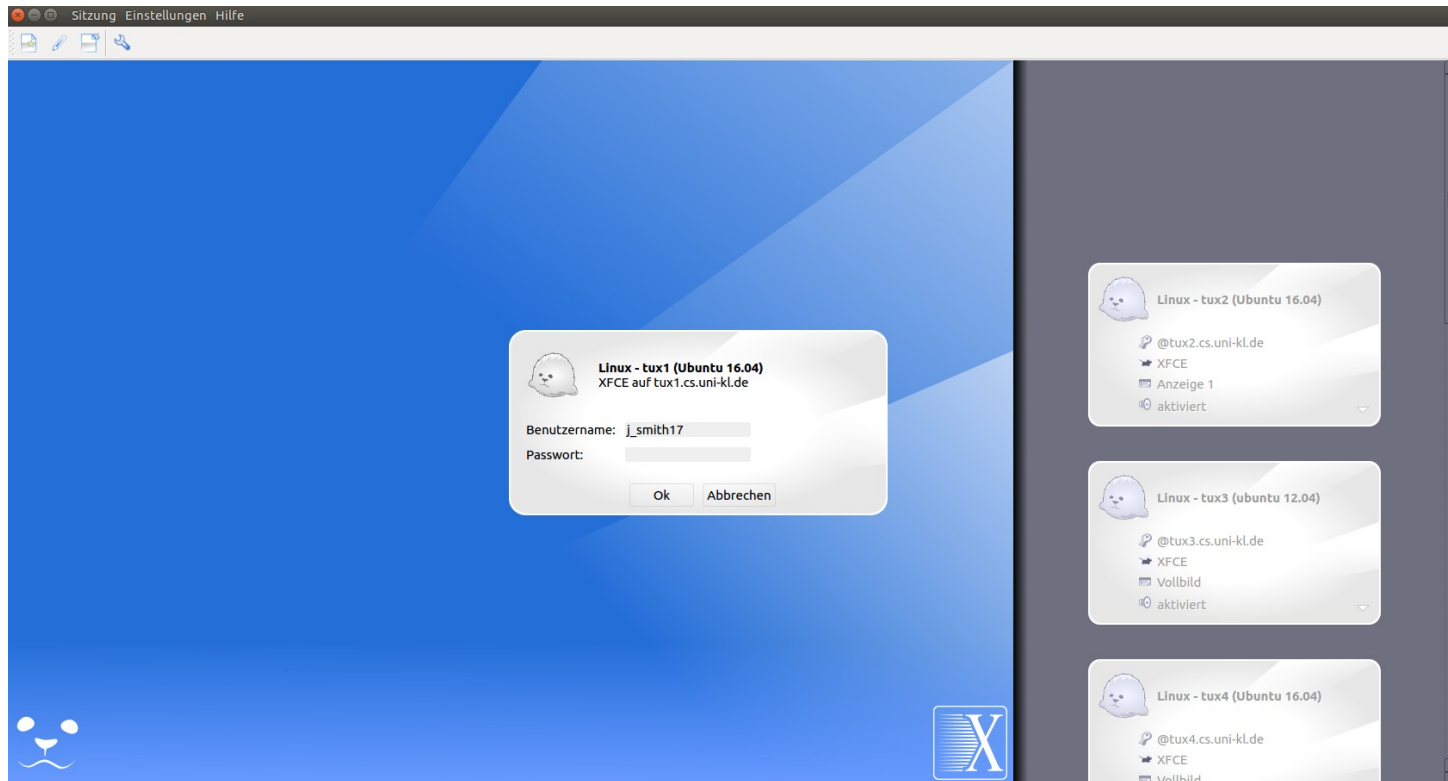


Geb. 48- (211 , 231)



Gebäude - Raum	Terminals	Notebook	Function
48 - 211	19	4	Terminal room
48 - 231	12		Terminal room
48 - 206	0	4	Learning room
32 - 411	20	2	Terminal room
32 - 410	10	4	Terminal room
36	2		Library

Sessionstarter



OS

Linux

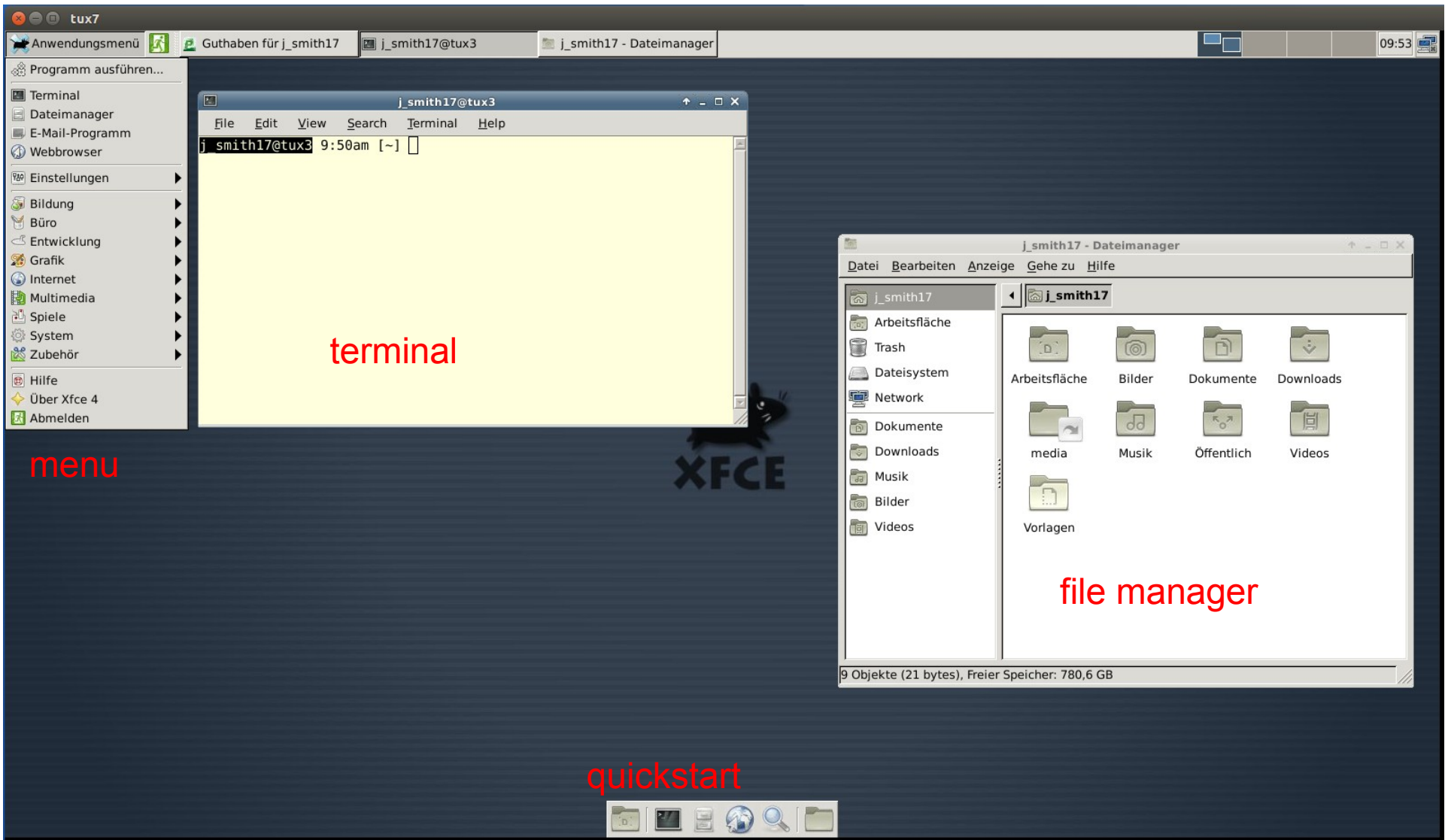
Protokol

X11/SSH

Encryption

yes

Linux - XFCE



Applications

- Firefox
- Thunderbird (settings: <https://sci.ics.uni-kl.de/dienste/email/>)
- Libre-Office
- Atril (PDF)
- Gimp
- Texmaker
- Eclipse
- Visual Studio Code
- Compilers javac, gcc, g++ ...
- Something missing? Just ask !

Remote-Access

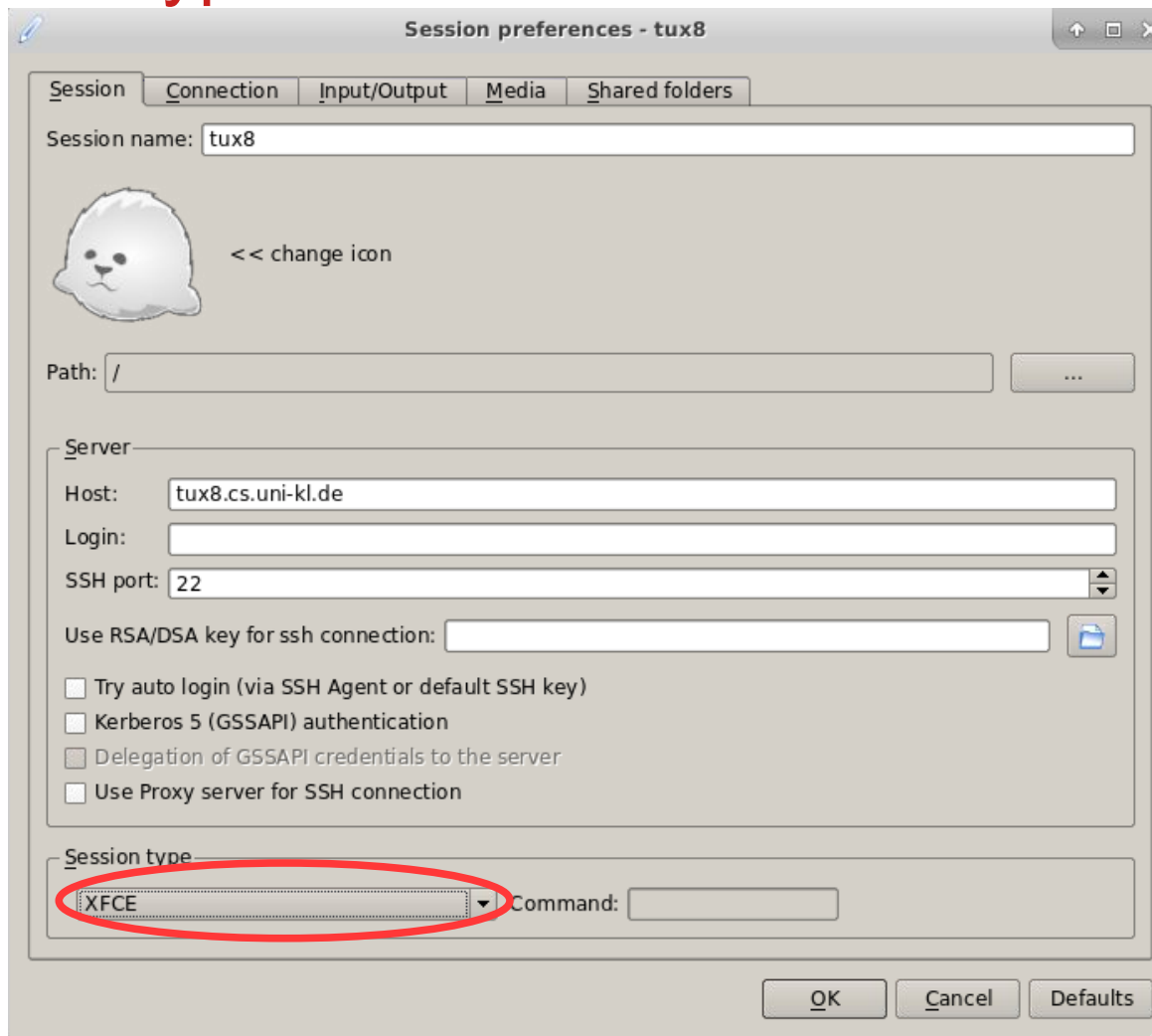
Login	Program	From
linux-server (tux*)	SSH (Text)	everywhere
linux-server (tux*)	X2Go-Client	everywhere

Copy Files	Program	From
to linux-server	(Win)SCP	everywhere

- more information
 - <http://sci.cs.uni-kl.de/rechnerzugang/remote>
 - <http://www.rhrk.uni-kl.de/netz-telefonie/netzanschluss/>
 - <https://wiki.x2go.org>
 - <https://winscp.net>

X2Go at home

- Host: tux{1..8}.cs.uni-kl.de
- Session type: XFCE



Printing

- monochrome laserprinters A4 (Postscript)
 - printername **scibw**: single
(and: **scibwt32411**, **scibwt48211** terminalrooms)
 - printername **scibwd**: duplex
(and: **scibwt32411d**, **scibwt48211d** terminalrooms)
- costs
 - 1,50 EUR / month for free (max. 4,50 €)
 - if you need more you have to buy printquota at SCI
 - costs **singlesided**: 4 ct / page (20 ct for 5 pages)
 - costs **duplex**: 3 ct /page (15 ct for 5 pages)
 - webprint: <http://print.cs.uni-kl.de:9192> (Universitynetwork only)
- only pdf-files! **Paperformat: A4!**
- pick up your printouts at **SCI-Servicepoint (48-226)** or at then printer in terminalrooms

E-Mail

- login@informatik.uni-kl.de (login@cs.uni-kl.de)
- **read / write using webmail**
 - *address:* <https://mail.uni-kl.de>
 - *account name:* login@informatik.uni-kl.de
 - *password:* see account-sheet
- **read / write using a mail client** (e.g. Thunderbird)
 - http://sci.cs.uni-kl.de/dienste/email/mail_cgpro
- configure forwarding using **webmail**
- **READ** your computer science e-mails !
 - many **important informations regarding yours studies** will be given through mailing-lists

Contact:

- **SCI-Office**

Building 48, room 226

Mo – Th 9:00 – 16:30

Fr. 9:00 – 13:30

- **Web**

<https://sci.cs.uni-kl.de>

- **E-Mail**

sci@cs.uni-kl.de / sci@informatik.uni-kl.de

- **Phone**

0631 – 205 2655